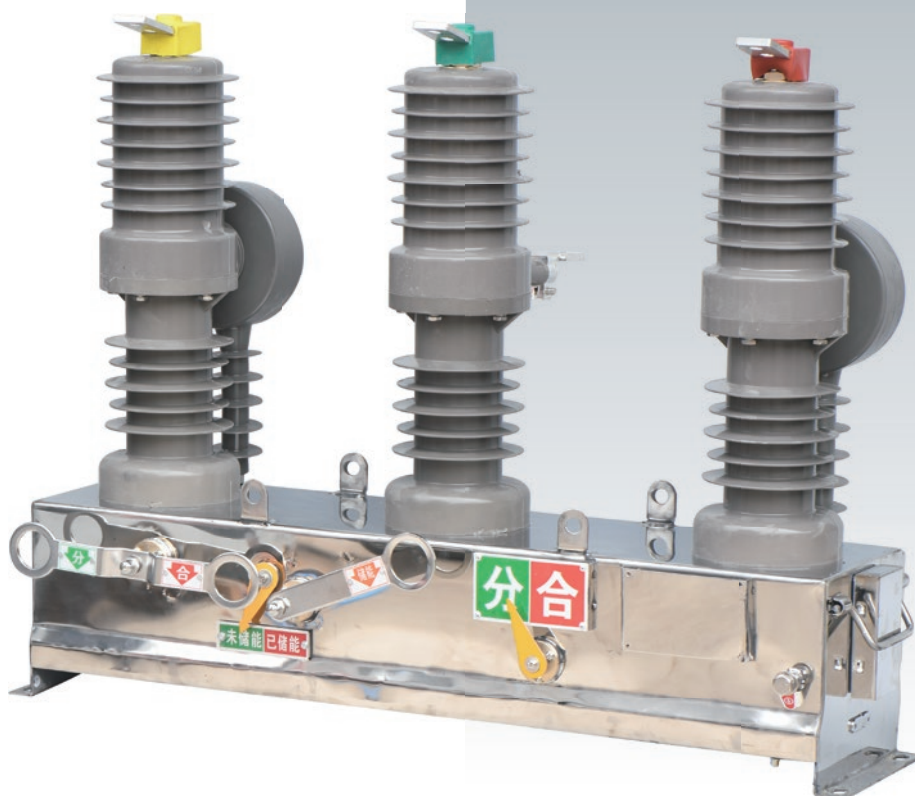


ZW32-12

Outdoor Vacuum Circuit Breaker



Overview

ZW32-12 outdoor vacuum circuit breaker (hereinafter referred to as circuit breaker) is an outdoor distribution equipment with rated voltage of 12kV and three-phase AC of 50Hz. It is mainly used to break and close the load current, overload current and short circuit current in the power system. It is suitable for protection and control in power distribution systems of substations and industrial and mining enterprises, and places where rural power grids are frequently operated.

The circuit breaker has the characteristics of small volume, light weight, anti-condensation, maintenance-free, etc., and can adapt to harsh climatic conditions and dirty environment.

ZW32-12

Outdoor Vacuum Circuit Breaker



Model meaning

ZW	32	-	12	/	T	630	-	20	G	-	□
↓	↓		↓		↓	↓		↓	↓		↓
Outdoor Vacuum Circuit Breaker	Design sequence number		Rated voltage (kV)		Ammunition handling mechanism	Rated current (A)		Rated short circuit breaking current (kA)	Tape isolation		S hand exercise D electric exercise

Meet the standard

- ◆ GB1984 AC High Voltage Circuit Breaker;
- ◆ GB11022 "Common Technical Requirements for High Voltage Switchgear and Control Equipment Standards";
- ◆ GB31.1-6 "High voltage transmission and transformation equipment insulation cooperation";
- ◆ GB763 "Heating of AC high voltage electrical appliances during long-term work";
- ◆ GB2706 "AC high voltage electrical equipment dynamic, thermal stability test method";
- ◆ GB3309 "Mechanical Test of High voltage Switchgear at normal temperature";
- ◆ DL/T593 "High voltage switchgear joint order technical conditions".

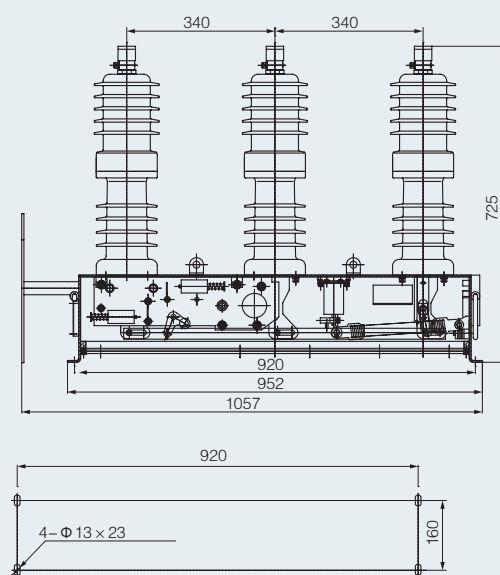
Main technical parameters

Item	Units	Argument
Rated voltage	kV	12
Rated frequency	Hz	50
Rated current	A	630
Rated short-circuit breaking current	kA	20
Rated peak withstand current (peak)	kA	50
Rated short-time withstand current	kA	20
Rated short circuit closing current (peak)	kA	50
Mechanical life	time	10000
Rated short circuit breaking current breaking times	time	30
Power frequency withstand voltage (1min) : (wet)(dry) phase to phase, ground/fracture	kV	42/48
Lightning impulse withstand voltage (peak) phase to phase, ground/fracture	kV	75/85
Secondary circuit 1min power frequency voltage	kV	2

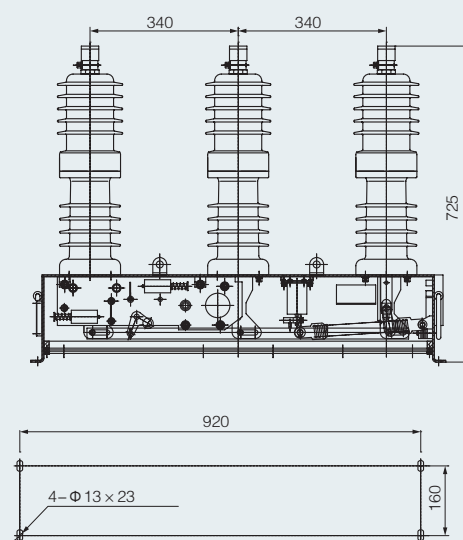
ZW32-12

Outdoor Vacuum Circuit Breaker

Dimensions and mounting dimensions (mm)



ZW32-12G tape isolation



ZW32-12 does not have isolation