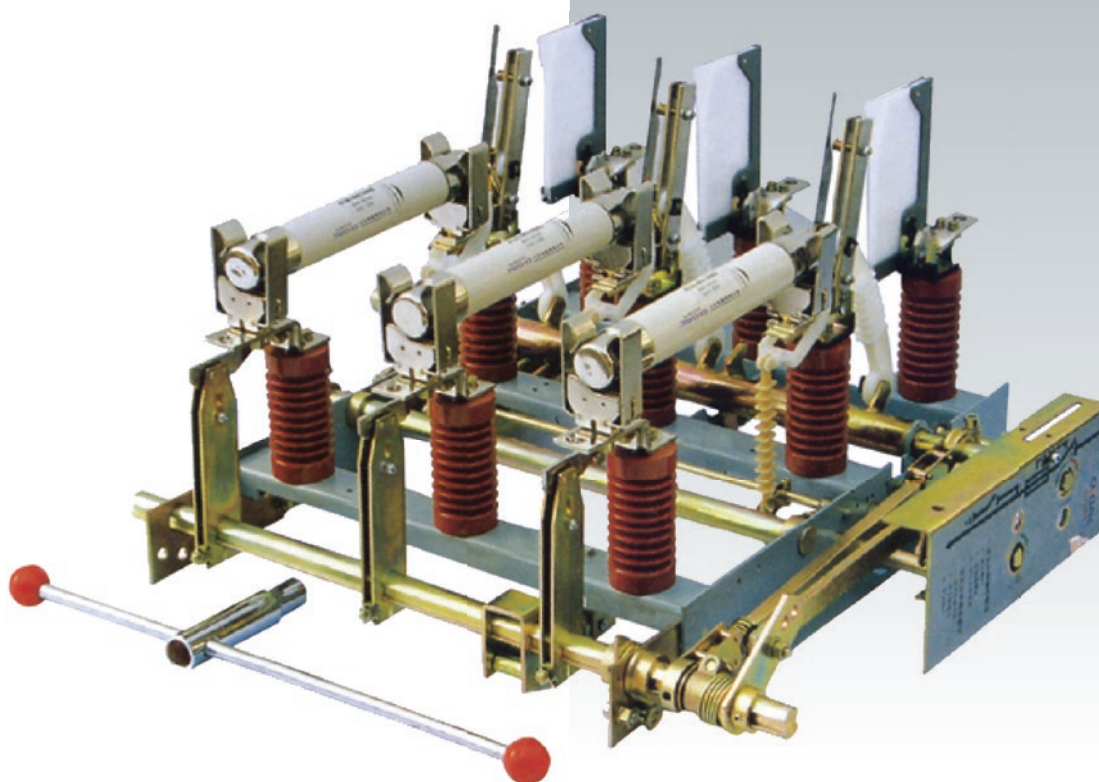


FN7-12DR

Indoor AC High Voltage Load Break
Switch with Fuse



Overview

FN7-12RD type AC high-voltage load switch is a new type of gas production type indoor high-voltage load switch, which is suitable for the three-phase AC power system with AC 50Hz and rated voltage 12KV, and is used for breaking load current and closing short-circuit current.

FN7-12DR

Indoor AC High Voltage Load Break Switch with Fuse



Main technical parameters

Rated voltage (KV RMS)		12	
Insulation level	Power frequency 50Hz withstand voltage 1min(KV. Effective value)	Phase to phase 42	Isolation fracture 48
	Lightning impulse withstand voltage (KV. Peak)	Phase to phase 75	Isolation fracture 85
Rated current (A)		400	630
Rated thermal stable current (KV. Effective value 4S)		12.5	20
Rated dynamic stable current (KV. Value)		31.5	50
Rated short circuit closing current (KA. Peak)		31.5	50

Installation and use

Normal use conditions:

Ambient air temperature: Upper limit: +40°C ; Lower limit: 10°C in general area, -25°C in high cold area

Altitude: The sea level is 1000m and below

Relative humidity: daily average less than 95%, monthly average less than 90%

The surrounding air should not be significantly polluted by corrosive or flammable gases and water vapor

No frequent violent vibration

Main specification

Name	Model	DS	DK	L	R	RA	F
		The ground switch is at the incoming end	The ground switch is at the outgoing end	Interlocking device	Fuse	Knock out fuse	Electric brake opening device
Load switch	FN7-12	-	-	-	-	-	-
	FN7-12DSL	△	-	△	-	-	-
	FN7-12DXL	-	△	△	-	-	-
	FN7-12R	-	-	-	△	-	-
	FN7-12DSLRL	△	-	△	△	-	-
	FN7-12DXLRL	-	△	△	△	-	-
	FN7-12RAFL	-	-	-	-	△	△
	FN7-2DSLRLFL	△	-	-	-	△	△
	FN7-2DXLRLFL	-	△	-	-	△	△

FN7-12DR

Indoor AC High Voltage Load Break Switch with Fuse

Dimensions and mounting dimensions (mm)

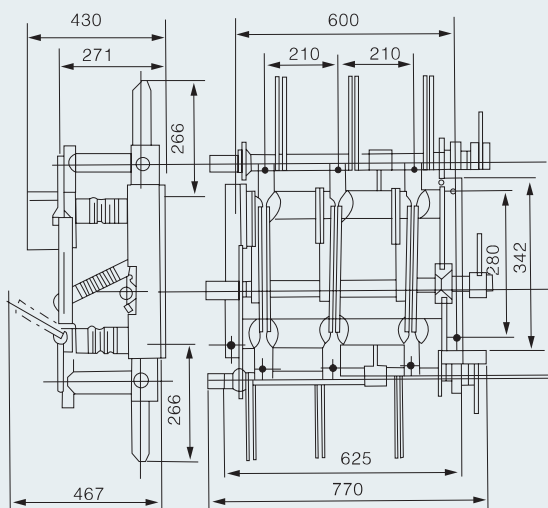


Figure 1: No trip "line" load switch

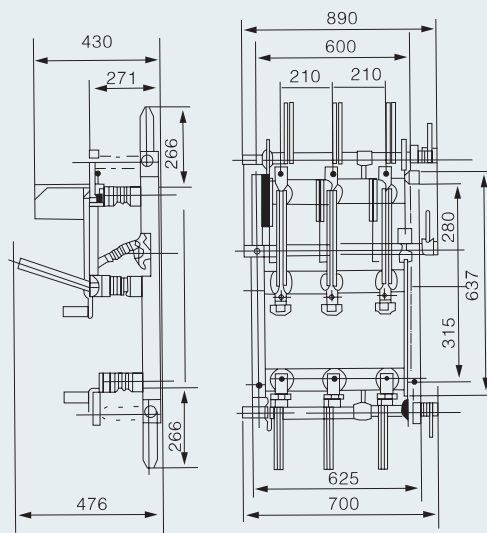


Figure 2: "Transformer protection" load switch without trip

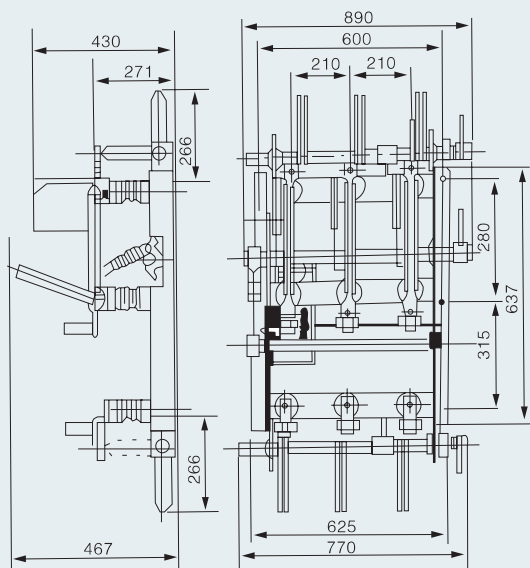


Figure 3: The trip device hits the load switch

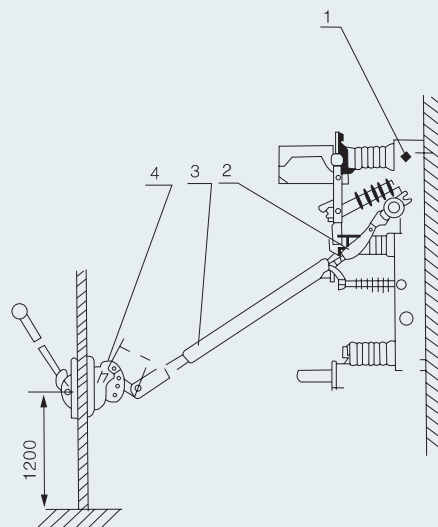


Figure 4: Installation diagram of CS6 operating mechanism

FN7-12DR

Indoor AC High Voltage Load Break Switch with Fuse

Dimensions and mounting dimensions (mm)

